



NEWINGTON  
LONDON

2 Bedrooms

Apartment

Located in London

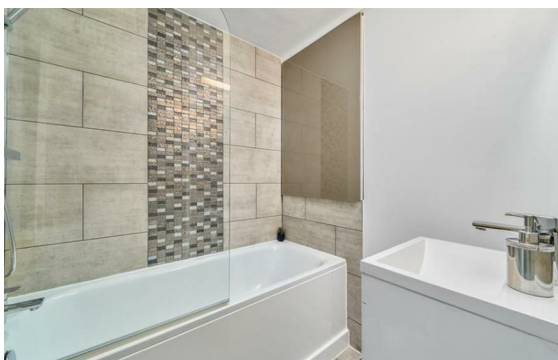
£950 Per Month



info@newingtonstates.com

<http://www.newingtonstates.com>

020 7724 2233



A newly refurbished and well-presented two-bedroom, two-bathroom apartment offering bright and spacious accommodation throughout. Set within a popular portered building in Marylebone with lift access, the property features a generous reception room, a modern fully fitted kitchen, and two stylish bathrooms. Both bedrooms are well proportioned, providing comfortable living space.

The apartment is ideally located within easy reach of Marylebone's shops, cafés, restaurants, and excellent transport connections, making it an ideal central London home.

EPC rating: C

## Energy Efficiency Rating: C

Agents Note: Whilst every care has been taken to prepare these particulars, they are for guidance purposes only. All measurements are approximate and are for general guidance purposes only and whilst every care has been taken to ensure their accuracy, they should not be relied upon and potential buyers/tenants are advised to recheck the measurements.

# NEWINGTON LONDON

60 Upper Montagu Street

London

W1H 1SN

020 7724 2233

[info@newingtonstates.com](mailto:info@newingtonstates.com)

<http://www.newingtonstates.com>